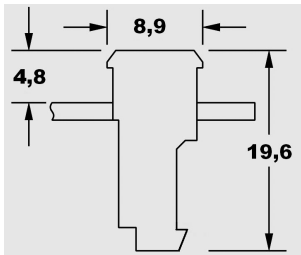




IDC connector ASI_SB2AWG18

Description:

2 poles, for AWG18, serves to connect the AS-Interface slaves by insulation piercing (IDC technology); with lock mechanism and strain relief
Technical data: . connector spacing 3.96 mm . wire size: AWG18 (0.8...1.0 mm²) . outside dia.: 1.0...2.28 mm Recommendation: optimal strain relief when used with ASI_K2



Category:

Accessories for AS-Interface

Series:

Accessories for ASI

With labelling option:

no