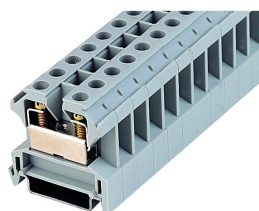


IK16

28.06.2017


General Data

Type Reference	IK16
Description	Feed-through terminal, screw connection
Approvals	CE, VDE, CSA, Demko, DNVGL, Lloyds, Semko, UKCA, UR
Terminal type	Terminal block
Terminal width	10 mm
Mounting method	top hat rail N35, EN60715 TH35
Connection type	screw connection, slotted screw
Thread size of screw connection	M4
Torque	1.2 Nm
Rated cross section	16 mm ²
Wire size (solid)	0.5 ... 16 mm ²
Wire size (stranded)	0.5 ... 16 mm ²
Rated voltage	1000 V
Rated current	76 A
Max. storage temperature	-40°C ... 80°C
Max. operating temperature	-30°C ... 40°C

Photo

Data acc. to IEC 60947-7-1

Flammability class acc. to UL94	V2
Pollution degree	3
Overvoltage category	III
Material group	I
Insulating material	PA 6.6
Stripping length	11 mm

Data acc. to UL1059

Torque	18 Lb In
Wire size (solid)	6-22 AWG



Rated voltage	600 V
Rated current	65 A

Data acc. to UL1059

Wire size (solid)	6 AWG
Rated voltage	600 V
Rated current	80 A

Data acc. to UL1059

Torque	1.2 Nm
Wire size (solid)	20-6 AWG
Rated voltage	600 V
Rated current	68 A

Data acc. to UL1059

Wire size (solid)	20-6 AWG / max. 16mm ²
Rated voltage	1000 V
Rated current	76 A

Data acc. to UL1059

Wire size (solid)	16 mm ²
Rated voltage	600 V
Rated current	68 A

