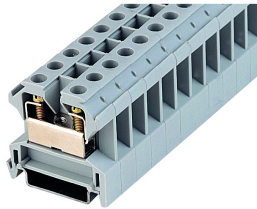


IK16BL

21.04.2021


General Data

Type Reference	IK16BL
Description	Feed-through terminal, screw connection
Approvals	CE, CSA, Demko, DNVGL, Lloyds, Semko, UKCA, UR
Terminal type	Terminal block
Terminal width	10 mm
Mounting method	top hat rail N35, EN60715 TH35
Connection type	screw connection, slotted screw
Thread size of screw connection	M4
Torque	1.2 Nm
Rated cross section	16 mm ²
Wire size (solid)	0.5 ... 16 mm ²
Wire size (stranded)	0.5 ... 16 mm ²
Rated voltage	750 V
Rated current	76 A
Max. storage temperature	-40°C ... 80°C
Max. operating temperature	-30°C ... 40°C

Photo

Data acc. to IEC 60947-7-1

Flammability class acc. to UL94	V2
Pollution degree	3
Overvoltage category	III
Material group	I
Insulating material	PA 6.6
Stripping length	11 mm

Data acc. to UL1059

Torque	18 Lb In
Wire size (solid)	6-22 AWG



Rated voltage 600 V

Rated current 65 A

Data acc. to UL1059

Wire size (solid) 6 AWG

Rated voltage 600 V

Rated current 80 A

Data acc. to UL1059

Torque 1.2 Nm

Wire size (solid) 20-6 AWG

Rated voltage 600 V

Rated current 68 A

Data acc. to UL1059

Wire size (solid) 20-6 AWG / max. 16mm²

Rated voltage 1000 V

Rated current 76 A

Data acc. to UL1059

Wire size (solid) 16 mm²

Rated voltage 600 V

Rated current 68 A

