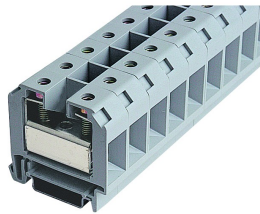


IK51

04.11.2014


General Data

Type Reference	IK51
Description	Feed-through terminal, screw connection
Approvals	CE, VDE, DNVGL, Lloyds, UKCA, UR
Terminal type	Terminal block
Terminal width	16 mm
Mounting method	top hat rail N35, EN60715 TH35
Connection type	screw connection, hexagon socket/slotted screw
Thread size of screw connection	M6
Torque	5.6 Nm / 4 Nm (hexagon socket / slotted screw)
Rated cross section	50 mm ²
Wire size (solid)	2x16/1x16 50 mm ²
Wire size (stranded)	2x16/1x16 50 mm ²
Rated voltage	1000 V
Rated current	150 A
Max. storage temperature	-40°C ... 80°C
Max. operating temperature	-30°C ... 40°C

Photo

Data acc. to IEC 60947-7-1

Flammability class acc. to UL94	V2
Pollution degree	3
Overvoltage category	III
Material group	I
Insulating material	PA 6.6
Stripping length	16 mm

Data acc. to UL1059

Torque	5.6 Nm
Wire size (solid)	1/0-6 AWG



Rated voltage	600 V
Rated current	150 A

Data acc. to UL1059

Wire size (solid)	50 mm ²
Rated voltage	1000 V
Rated current	150 A

Data acc. to UL1059

Wire size (solid)	50 mm ²
Rated voltage	600 V
Rated current	132 A

