

Configuration

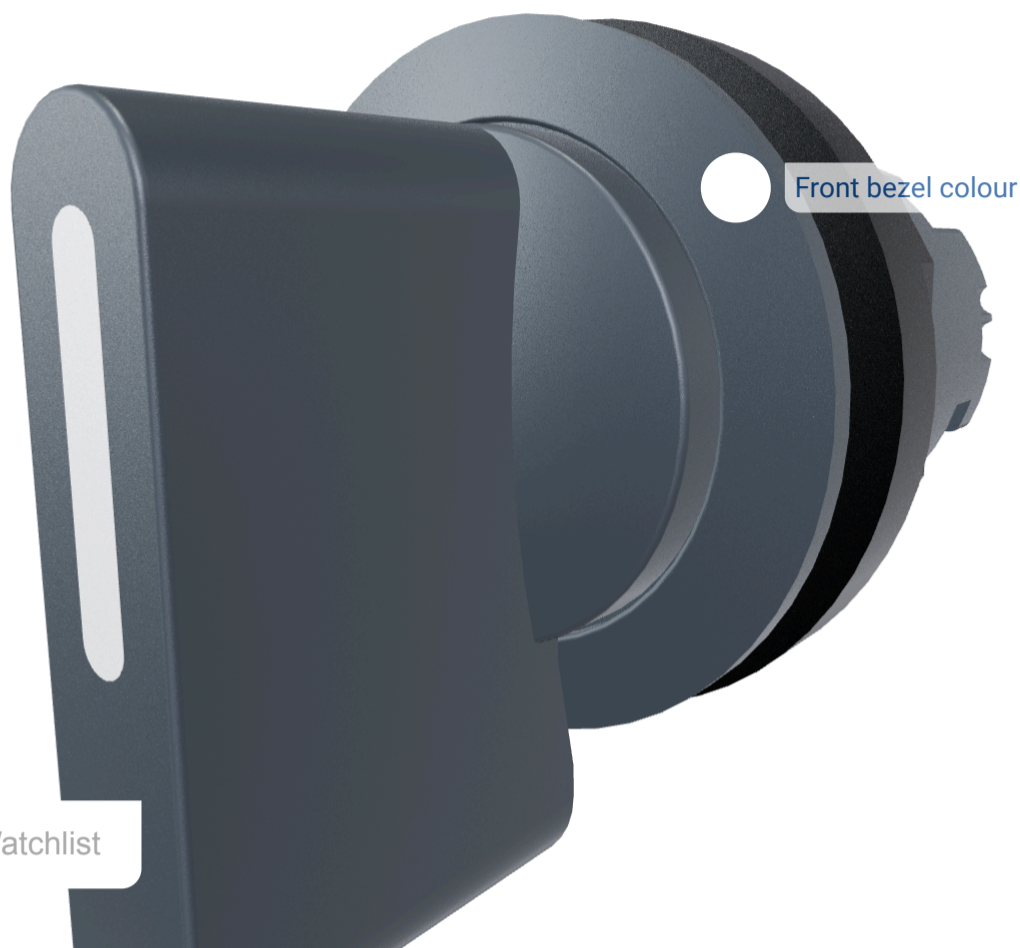


Modular holder:

Color front bezel:

Accessories:

Watchlist



Technical data

Product images

Configuration:

JRGSTB

Switching position

45° momentary
0° latching
-45° momentary

Switching function

Momentary function

Class of protection

II (protective insulation)

Protection class front

IP65

Shape

round

Mounting aperture

Ø 22,3mm

Series

RONDEX-JUWEL®

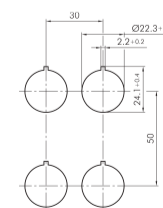
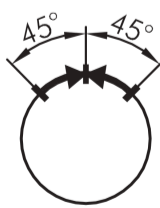
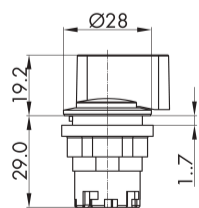
Front bezel color

charcoal

Illumination

No

TECHNICAL SKETCHES



CONTACT

THE COMPANY

INFORMATION

Application portal