


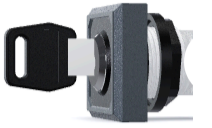


Configuration ×

Contactor:	-	
Color front bezel:		
Switching position:		
Accessories:		



Watchlist

Technical data

Product images

Configuration:

OKSSA15

Key actuator, maintained

Class of Protection

II (protective insulation)

Switching Function

Latching function

Mounting Aperture

Ø 16,2mm

Protection Class Front

IP65

Series

OKTRON®

Switching Position

0° key removal
90° latching, key removal

Shape

square

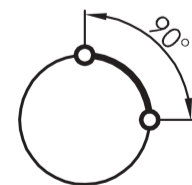
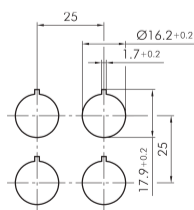
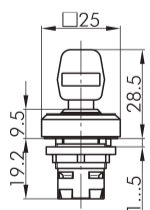
Front Bezel Color

anthracite

Illumination

No

TECHNICAL SKETCHES



CONTACT

THE COMPANY

INFORMATION

Application portal