

Configuration



Modular holder:



Watchlist

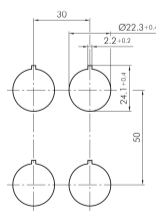
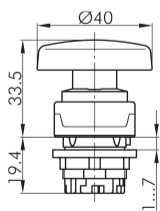
Technical data

Product images

Configuration:

RMCS	
Switching function	Momentary function
Class of protection	II (protective insulation)
Series	RONDEX-M
Protection class front	IP65
Anti block collar	No
Shape	round
Front bezel color	metallic/charcoal
Mounting aperture	Ø 22,3mm
Actuation travel	6mm
Illumination	No

TECHNICAL SKETCHES



CONTACT

THE COMPANY

INFORMATION

Application portal