

Legend  
**I= Switching position >= Spring return**

**Illuminated selector head, maintained RRJWAL\_KL**

Category:	Selector switches (momentary/maintained)
Series:	RONTRON-R-JUWEL
Panel cut-out:	Ø 22.3 mm
Protection class:	II (protective insulation)
Degree of protection:	IP65
Switching function:	maintained action
Illumination:	yes
With labelling option:	no
Front bezel	silver-coloured
Knob colour	clear
Positive opening:	no
Shape:	round

**Optional accessory**



AS-Interface module ASI\_BTK30\_01



AS-Interface module ASI\_BTK30\_02



AS-Interface slave with T5,5K socket ASI\_BZL5



Illuminated contact block, momentary AZL4I



Illuminated contact block, momentary AZL4O



Illuminated contact block, momentary, W2x4,6d BZLI



Illuminated contact block, momentary, T5,5K BZLI5



Illuminated contact block, momentary, T5,5K BZLI5K



Illuminated contact block, momentary, T5,5K BZLI5K\_AU



Illuminated contact block, momentary, T5,5K BZLI5\_AU



Illuminated contact block, momentary, W2x4,6d BZLII



Illuminated contact block, momentary, T5,5K BZLII5



Illuminated contact block, momentary, T5,5K BZLII5K



Illuminated contact block, momentary, T5,5K BZLII5K\_AU



Illuminated contact block, momentary, T5,5K BZLII5\_AU



Illuminated contact block, momentary, W2x4,6d BZLIIK



Illuminated contact block, momentary, W2x4,6d BZLIIK\_AU



Illuminated contact block, momentary, W2x4,6d BZLII\_AU



Illuminated contact block, momentary, W2x4,6d BZLIK



Illuminated contact block, momentary, W2x4,6d BZLIK\_AU



Illuminated contact block, momentary, W2x4,6d BZLI\_AU



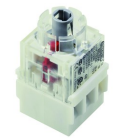
Illuminated contact block, momentary, W2x4,6d BZLO



Illuminated contact block, momentary, T5,5K BZLO5



Illuminated contact block, momentary, T5,5K BZLO5K



Illuminated contact block, momentary, T5,5K BZLO5K\_AU



Illuminated contact block, momentary, W2x4,6d BZLOI



Illuminated contact block, momentary, T5,5K BZLOI5



Illuminated contact block, momentary, T5,5K BZLOI5K



Illuminated contact block, momentary, T5,5K BZLOI5K\_AU



Illuminated contact block, momentary, T5,5K BZLOI5\_AU



Illuminated contact block, momentary, W2x4,6d BZLOIK



Illuminated contact block, momentary, W2x4,6d BZLOIK\_AU



Illuminated contact block, momentary, W2x4,6d BZLOI\_AU



Illuminated contact block, momentary, W2x4,6d BZLOK



Illuminated contact block, momentary, W2x4,6d BZLOK\_AU



Illuminated contact block, momentary, W2x4,6d BZLOO



Illuminated contact block, momentary, T5,5K BZLOO5



Illuminated contact block, momentary, T5,5K BZLOO5K



Illuminated contact block, momentary, T5,5K BZLOO5K\_AU



Illuminated contact block, momentary, T5,5K BZLOO5\_AU



Illuminated contact block, momentary, W2x4,6d BZLOOK



Illuminated contact block, momentary, W2x4,6d BZLOOK\_AU



Illuminated contact block, momentary, W2x4,6d BZLOO\_AU



Illuminated contact block, momentary, W2x4,6d BZLO\_AU



CANopen basic module CO\_BTK30\_01



CANopen basic module CO\_BTK30\_02



Illuminated contact block, momentary CTL2



Illuminated contact block, momentary CTLF



Illuminated contact block, momentary, for 250V~ CTLF\_250



Illuminated contact block, momentary CTLP\_485



Illuminated contact block, momentary CZTLP



Illuminated contact block, momentary CZTLP2



Insulated plastic enclosure, 1 mounting hole DIRL1V-R22



Insulated plastic enclosure, 1 mounting hole DIRL1VGB-R22



Insulated plastic enclosure, 2 mounting holes DIRL2V-R22



Insulated plastic enclosure, 3 mounting holes DIRL3V-R22



Insulated plastic enclosure, 3 resp. 4 mounting holes DIRL4V-R22



Profibus basic module DP\_BTK30\_01



Profibus basic module DP\_BTK30\_02



Profibus basic module DP\_BTK30\_03





Profibus basic module DP\_BTK30\_04



EtherCAT basic module EC\_BTK30\_01



EtherCAT basic module EC\_BTK30\_02



EtherCAT basic module EC\_BTK30\_03



EtherCAT basic module EC\_BTK30\_04



EtherNet IP basic module EN\_BTK30\_01



EtherNet IP basic module EN\_BTK30\_02



EtherNet IP basic module EN\_BTK30\_03



EtherNet IP basic module EN\_BTK30\_04



Illuminated contact block, momentary FRTFLI



Illuminated contact block, momentary FRTFLII



Illuminated contact block, momentary FRTFLOI



Illuminated contact block, momentary FRTFLOO



Contact block, momentary FRTPI



Contact block, momentary FRTPII



Contact block, momentary FRTPII\_AU



Contact block, momentary FRTPI\_AU



Contact block, momentary FRTPO



Contact block, momentary FRTPOI



Contact block, momentary FRTPOI\_AU



Contact block, momentary FRTPOO



Contact block, momentary FRTPOO\_AU



Contact block, momentary FRTPO\_AU



IO-Link basic module IL\_BTK30\_03



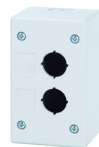
IO-Link basic module IL\_BTK30\_04



Insulated plastic enclosure, 1 mounting hole IRL1M



Insulated plastic enclosure, 1 mounting hole IRL1M\_GELB



Insulated plastic enclosure, 2 mounting holes IRL2M



Insulated plastic enclosure, 3 mounting holes IRL3M



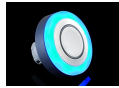
Insulated plastic enclosure, 5 mounting holes IRL5M



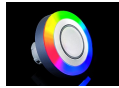
LED light ring for status indication or additional illumination  
LR22K\_24B



LED light ring for status indication or additional illumination  
LR22K\_24G



LED light ring for status indication or additional illumination  
LR22K\_24R



RGB LED light ring for status indication or illumination  
LR22K\_24RGB



Two-coloured alternate LED-illuminated ring for status indication  
LR22K\_24R\_G



LED light ring for status indication or additional illumination  
LR22K\_24W



LED light ring for status indication or additional illumination  
LR22K\_24Y



Powerlink basic module PL\_BTK30\_01



Powerlink basic module PL\_BTK30\_02



Powerlink basic module PL\_BTK30\_03



Powerlink basic module PL\_BTK30\_04



Profinet I/O basic module PN\_BTK30\_01



Profinet I/O basic module PN\_BTK30\_02



Profinet I/O basic module PN\_BTK30\_03



Profinet I/O basic module PN\_BTK30\_04



External nameplate holder RRJABT



Insulated plastic enclosure with 1 mounting hole SIL22/1



High insulated plastic enclosure with 1 mounting hole SILH22/1

