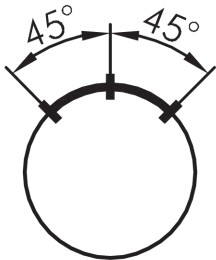
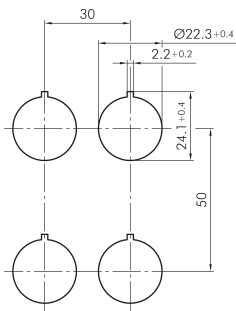
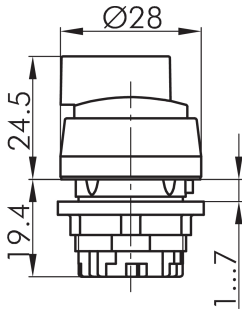




### Illuminated selector head, maintained RWBL

Description: inclusive four small, transparent colour plates in red, yellow, green, white and blue

Category:	Selector switches (momentary/maintained)
Series:	RONDEX
Panel cut-out:	Ø 22.3 mm
Protection class:	II (protective insulation)
Degree of protection:	IP65
Switching function:	maintained action
Illumination:	yes
With labelling option:	no
Front bezel	charcoal
Shape:	round



#### Legend

**I= Switching position >=**  
**Spring return**