

Configuration ×

Contactor: - ⚡

Color front bezel: 🎨

Switching position: ↻

Accessories:



Watchlist

Technical data

Product images

Configuration:

SSSA14

Key actuator, maintained

Series

Shortron® base-plate mounting

Class of Protection

II (protective insulation)

Switching Function

Latching function

Protection Class Front

IP65

Switching Position

0° key removal

90° latching

Shape

round

Mounting Aperture

Ø 22,3mm

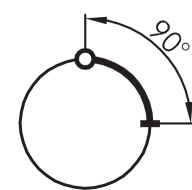
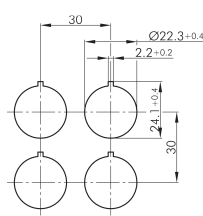
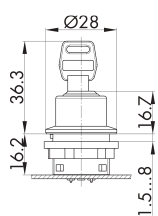
Illumination

No

Front Bezel Color

silver

TECHNICAL SKETCHES



CONTACT

THE COMPANY

INFORMATION

Application portal